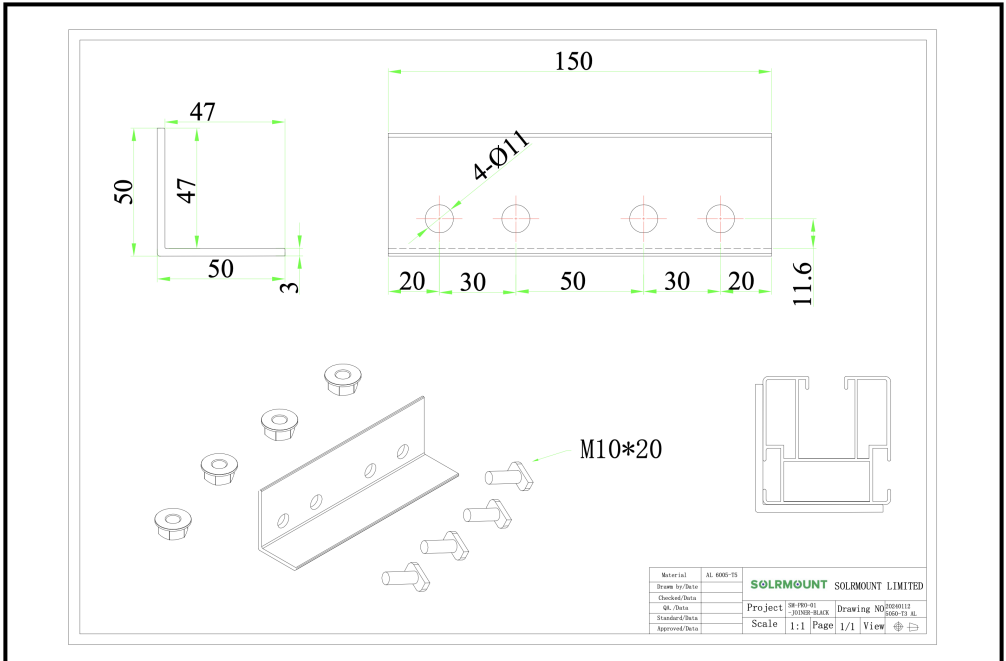


# SOLRMOUNT

Create Innovate Optimise

## Component SM-PRO-01-JOINER-BLACK



## Technical Specification

Roof application	Pitch roof
Dimensions	L150*W50*H50 mm
Weight	Theoretical weight 0.144kg
Colour	Black electrolysis
Material	AL 6005-T5 & SUS 304
Wind speed	<60m/s
Snow load	<1.4kn/m <sup>2</sup>
Standards	GB50797/AS NZS1170.2-2011 EN1991, ASCE7-10 JIS C 8955

